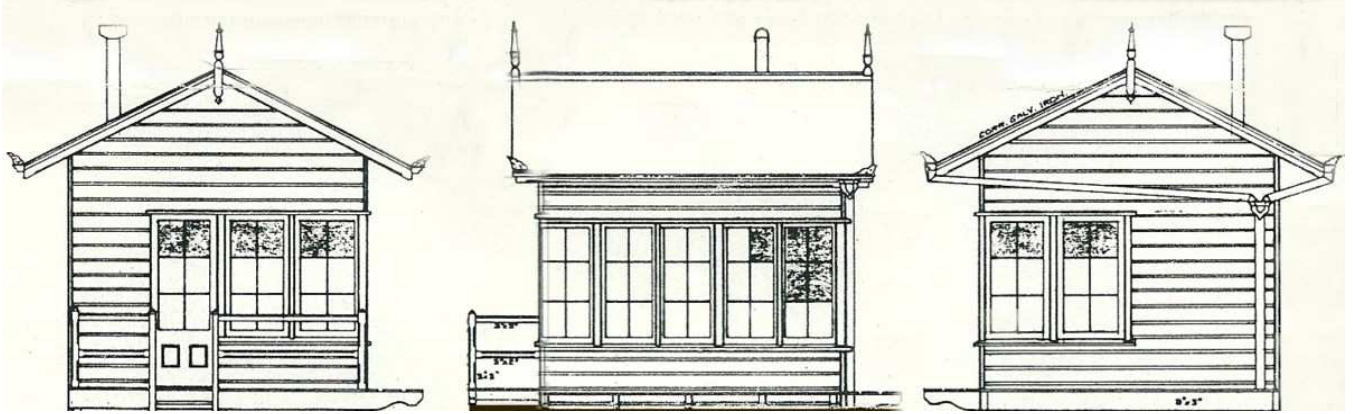
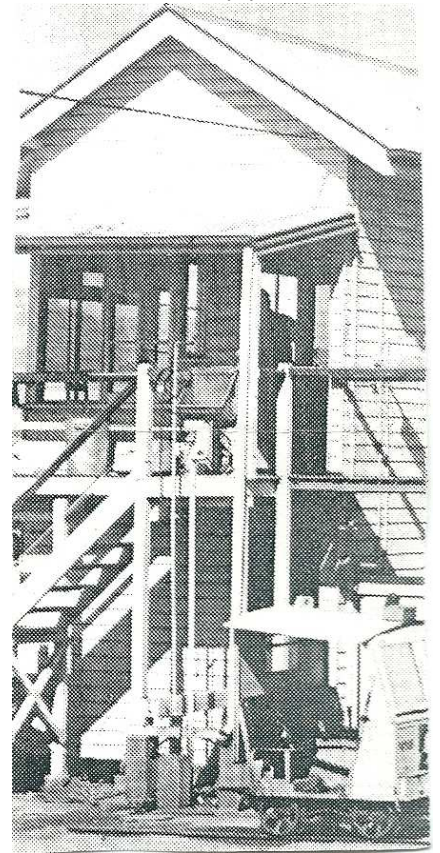
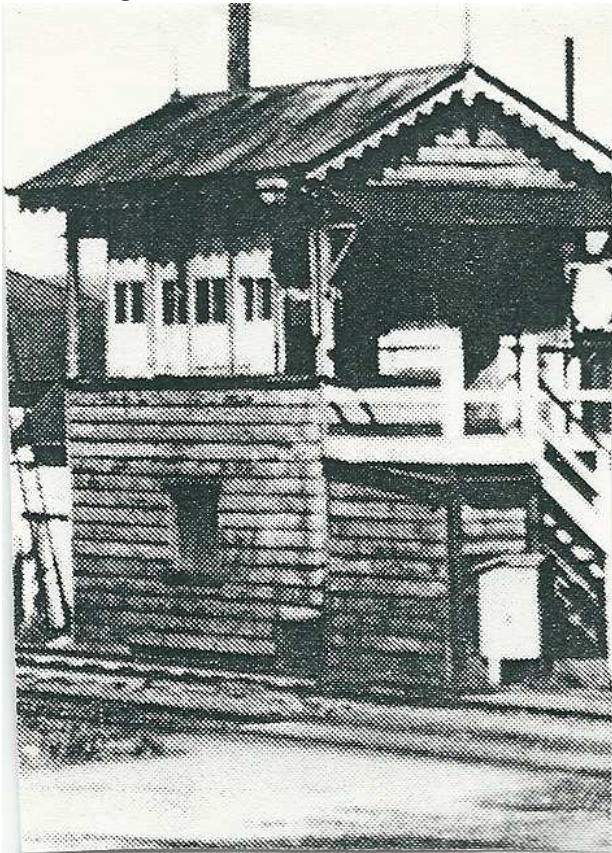


The BTR Signal Cabin at Sundial Junction

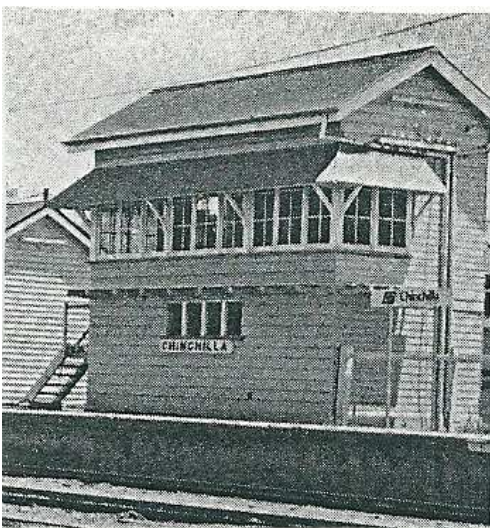
This Signal Cabin depicts Queensland Railways practice, here with 5 windows in front wall.



A drawing of the model. The non-door end wall has two (2) windows, model has three (3).



Photos used to 'capture' the character of Queensland Railways Signal Cabins.



The BTR Signal Cabin at Sundial Junction

Lowmead Signal Cabin has a 6 window front, single storey, as used for basis of the model.



Interior view reveals simplicity of inside equipment.

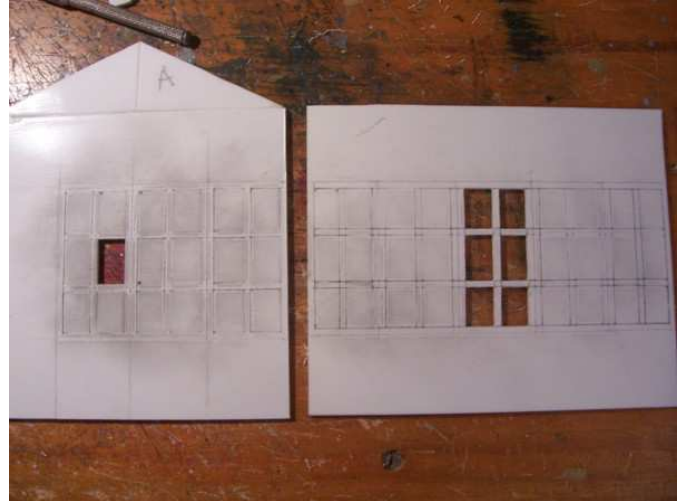
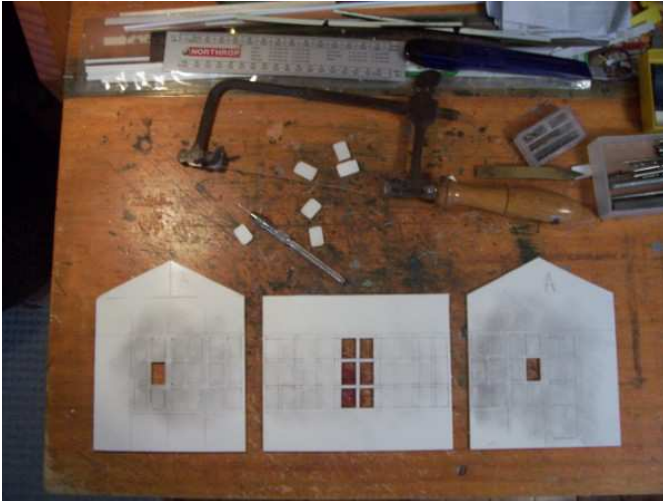
The BTR Signal Cabin at Sundial Junction

Colour schemes varied from place to place too.



The BTR Signal Cabin at Sundial Junction

The model is made from styrene, 3mm, 2mm, 0.8mm and 0.5mm thick.



My mother told me to not fret, my wife doesn't like it (the sound) when I fret, and yet I must fret !



Despite having to fret so much, I decided to make two (2) of these Signal Cabins. Fret work in progress.



Decided on mirror images of the drawing and to put three (3) windows in end wall.

The BTR Signal Cabin at Sundial Junction

The finished model positioned on the Garden Railway.

